

# Community Commercial Farming. East Africa-2017

Our Challenge, Our Commitment, Our Expertise, The Partnership for Growth,  
Development and Wealth.

+972-50-6400090

[wekahtech@gmail.com](mailto:wekahtech@gmail.com)



**WEKAH**  
Technologies Ltd.



The Challenge:  
transforming  
farmers from  
Subsistence  
Agriculture to  
Commercial



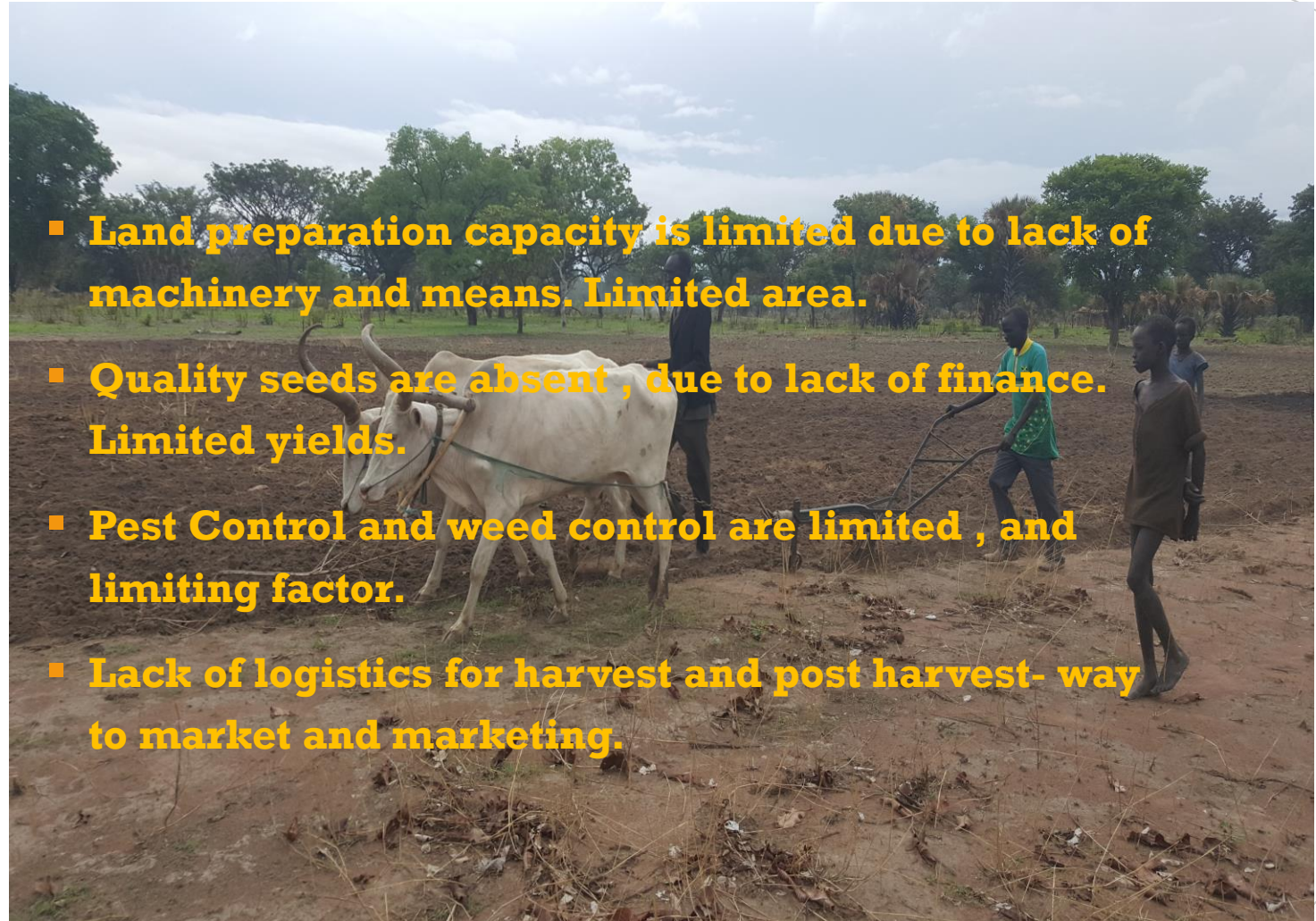
Farmers Need  
Technical and  
Logistical support  
and good seed  
material



## Farmers

Lacking elements and limiting factors:

- **Land preparation capacity is limited due to lack of machinery and means. Limited area.**
- **Quality seeds are absent , due to lack of finance. Limited yields.**
- **Pest Control and weed control are limited , and limiting factor.**
- **Lack of logistics for harvest and post harvest- way to market and marketing.**



## Regional And Climatic Effects

- Irregular rains and drought.
- Limited Storage. No central processing and storage facility with accessibility to the fields.
- Intensified attacks of plagues like Army Worm and Stalk Borer.
- Long Distance from Market and limited roads.



Required:  
Fast nation wide  
impact on food  
security and  
replacing imports.

## Farmers economic upgrade

### Conventional Farming



### Commercial Farming



- From 1 Acre to 3 Acres with professional instruction
- From 0.5 Tons/Acre to 2 Tons/Acre with advanced seeds and fertilizers
- From 500 \$/Acre to 2000 \$/Acre with industrial agriculture



**The viable Solution :  
CCF - Community  
Commercial Farming  
by Wekahtech.**

- Partnership the Company and the Community (farmers) witnessed by the state and local authorities.
- The Project will supply as a loan, the missing components, land preparation, seeds ,agrochemicals, logistics and marketing, to be recovered from the harvest and selling.
- The farmer will cultivate, supported with technical assistance for modern farming.
- As consequence , bigger fields and more farming communities as well as higher yields, will ensure solving deficiencies in markets and food security, as well as improving living standards of farmers and household economy.
- General improvement of the economy of the region.
- The Company will ensure a self sustained model, where all the operation is profitable.
- The project will help replace imports of staple food with local national production. Improvement to the countries economy.

# Methodology

- **The commercial farming pilot will start in the right season with the right crop. Where a logistics center can be identified.**
- **The Agreement with the communities and farmers will be done thru the local chief or administrator, with the participation of Rep . From the local Ministry of Agriculture and certification of the contract by the State ( Triple Contract).**
- **The Agreement will consist in shared yields( profit) by percentage, after deducting cost of goods and services rendered to the farmer. The sharing will be done only after all yield was handed to the service center, and sold to market.**
- **The services and inputs to be rendered to the farmers as a loan, with the intention to increase cultivated surface and boost higher yields ,will be limited initially to Seeds, Fertilizers, and Tractor Services (including emergency spraying against pests)+technical assistance.**
- **A predetermined price list of inputs and services will be published and annexed to the contract .**





# General Definitions

## CCF Vision:

- To empower farmer's economic ability, by combining traditional communities advantages, with the Company Economies of Scale capabilities, and expertise in Adjustable Modern Agriculture.

## Goals:

- To triple the production and selling ability of each farmer, by implementing Wekahtech Agro-Industrial Integration Management, within short term agreements.

## General Method:

- Creating an advanced industrial farming system, with central facility to manage the investment, instruction, production and marketing of motivated farmers.



## Components and Advantages:

- **For the farmer:**
    - **More production and more income.**
    - **Overcomes the limit of land preparation and inputs credit.**
    - **Learns new techniques and methods.**
    - **Lower Risk of losing money and greater food security.**
  - **For the County and Company:**
    - **Marketable production , bigger turnover, and low risk.**
    - **Modest Investments. Fast economic & social impact.**
    - **Recap. of investment for reinvesting in next season and sustainable expansion.**
  - **For the Country:**
    - **Efficient multiplying method for impact on the country's agriculture upgrading and food security growth.**
- 
- A photograph of a rural agricultural field. In the foreground, there is a large, dark brown, tilled field with visible furrows. In the middle ground, a green tractor is being operated by a person, with several other people standing nearby. The background shows a line of trees and a clear blue sky with some clouds. The overall scene depicts active farming operations.

# Sustainability and economic booster

Farmers economic step forward

## AGREEMENT



## 1<sup>st</sup> season



## 2<sup>nd</sup> season



## 3<sup>rd</sup> season

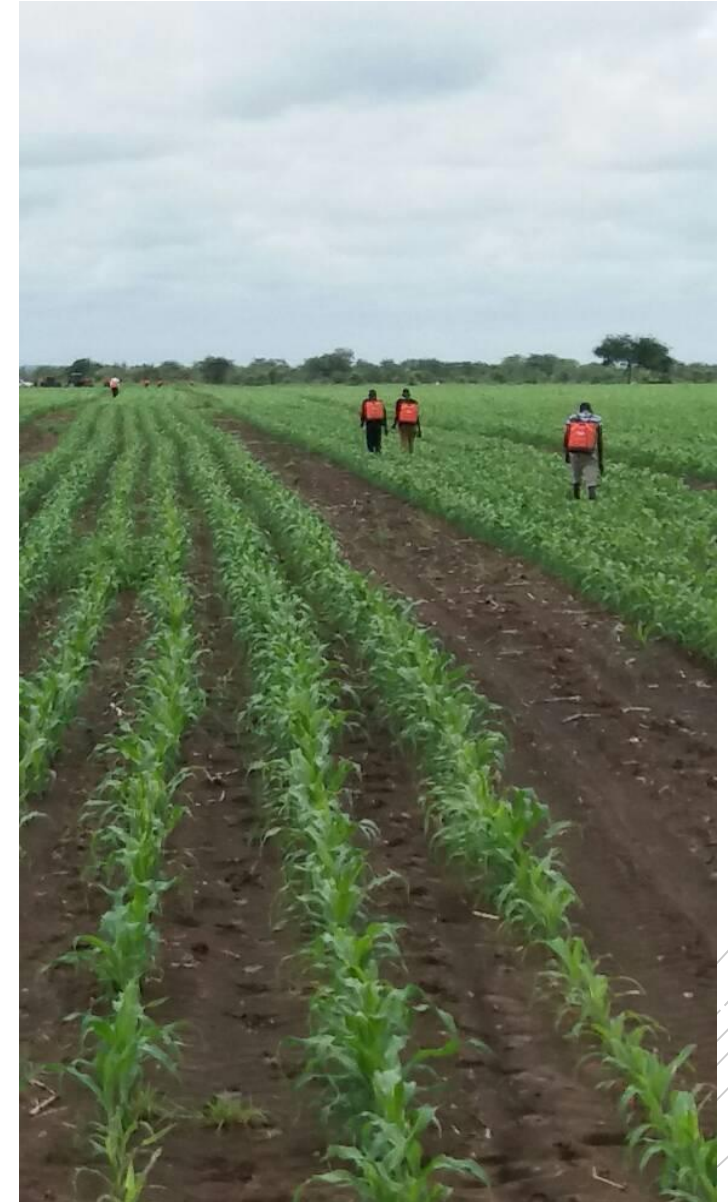


- From 0 Capital, to ownership of inputs/Irrigation System. etc
- From 0 Repay ability, to full one year repay ability, with higher income
- New Generation of Trained efficient farmers- self sustained.

Technological  
upgrade adapted  
to local conditions



Food Security and  
multiplication  
factor : from 6  
communities first  
year to 60 in  
second. Etc.



# CCF-Structure. (example)



Partnership for  
success and  
achievement for  
Farmers, Community  
Region and Company



Projects outcome  
and vision for  
future: Harvest  
celebrations, and  
prosperous families





Respecting and  
maintaining  
tradition and  
customs



Joining hand by  
hand with  
National, States  
and Local  
(traditional)  
Authorities



Constant Training  
and Capacitation.  
Future Generation  
of Successful  
Farmers



We know how  
to make it  
happen!!!



# THANK YOU!

- Accelerated Economic Growth
- Growing Food Security.
- Sustainability
- Modest Investment.
- Swift implementation.
- Fast multiplication factor.



**WERAH**  
Technologies Ltd.

